

User manual for mesh side set and plate side set



www.variant.dk



1. Contents

Congratulations on your new Variant equipment.

To get the full benefit of the equipment, you should follow certain advice and instructions. Therefore, it is important for you to read and store this manual.

Note especially those with  marked information.

If questions arise during the use of the equipment, which this manual do not immediately respond, you are of course always welcome to contact your dealer.

To ensure that your trailer equipment always is functional and ready for use, make sure that it is serviced by your local Variant dealer.

MANUFACTURER: Variant A/S
Godthåbsvej 5
7100 Vejle

TYPES

Mesh sides: 90537N, 90449N, 90129N, 90130N, 90562N, 90131N, 90563N, 90499N,
90680N, 90370N, 90550N, 90329N, 90536N, 90681N, 90682N, 90809N,
90844N

TYPES

Plate sides: 90799, 90790, 90791, 90792, 90793, 90794, 90795, 90796,
90797

1. Contents	2
2. Scope of delivery per set	3
3. Assembling.....	4
4. Disassembling.....	9
5. Appendix pages in the transition phase to the new mesh side type	11

2. Scope of delivery per set

All mesh side/plate side sets will be delivered with the following components:

2 pcs. mesh side (Item. 1)

1 pcs. mesh headboard (Item. 2)

1 pcs. mesh tailboard (Item. 3)

4 pcs. mesh side/plate side corner post (Item. 4)

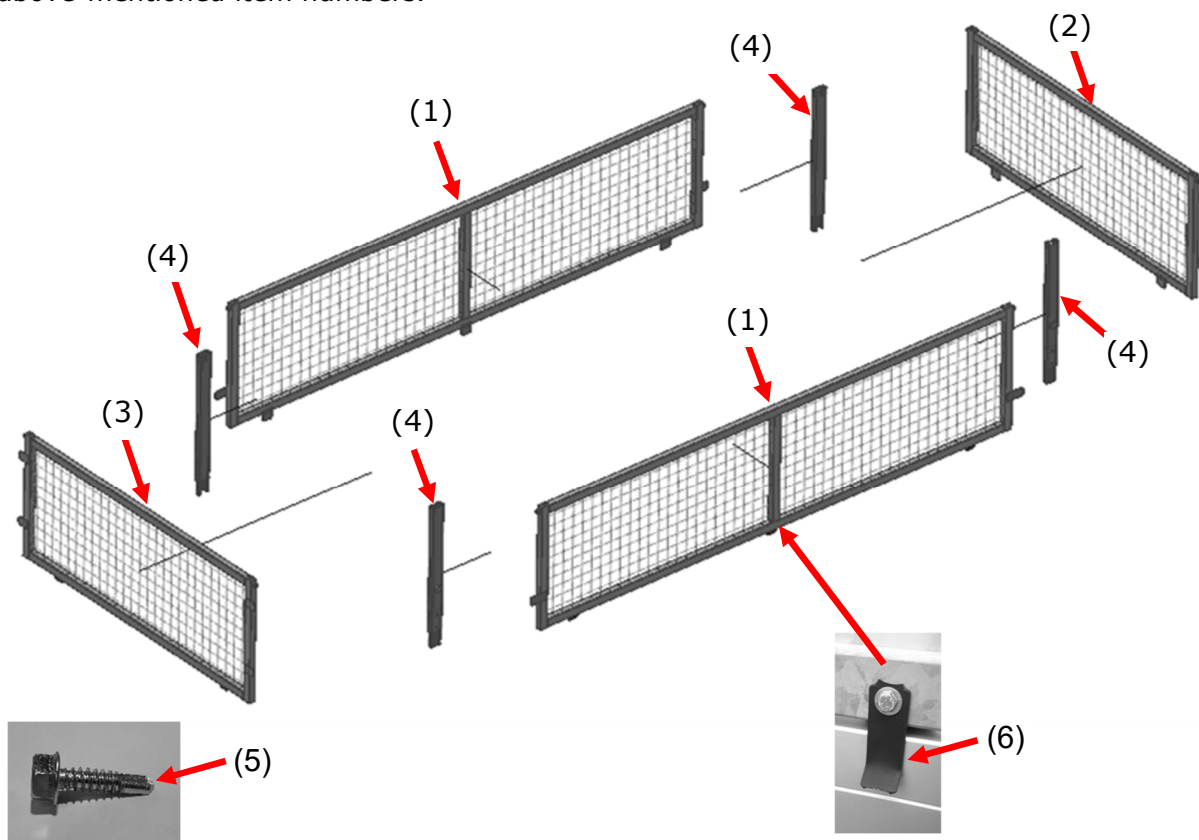
(Applies to all Proline, T2, T3 models: There will be used 2 pcs. front left / rear right model and 2 pcs. front right / rear left model, which are respectively mounted in one side of the trailer in the front and the other side in the rear).

(Applies to all 3VT and MT models: There will be used 1 pc. front left model, 1 pc. front right model, 1 pc. rear left model, 1 pc. rear right model, which are mounted in the different positions in all corners of the trailer).

4 pcs. DIN 7504 K - Ø6,3x25 self-tapping screw (Item. 5)

2 pcs. 90773 Stop plate, w. shrink flex, 2 pcs. M6x45 bolt, 4 pcs. Ø6 mm washer, 2 pcs. M6 locking nut (Item. 6)

The general sketch below shows, what are included in a mesh side/plate side set, compared to the above-mentioned item numbers.



3. Assembling

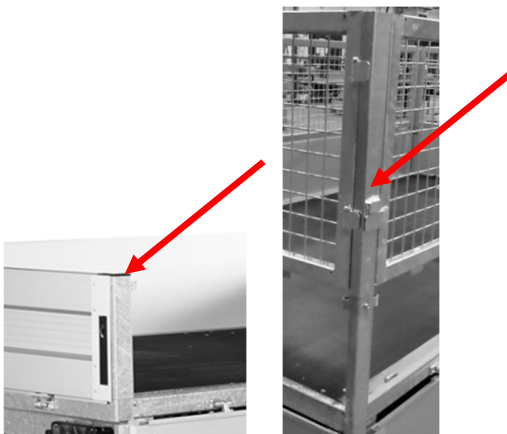
The first time the mesh side/plate side must be mounted on a trailer, you must drill a Ø4 mm hole in all 4 pcs. mesh side/plate side corner posts through the pre-drilled hole in all 4 pcs. corner posts.

This must be done for locking of the mesh side/plate side with a self-tapping screw in each of the 4 pcs. corner posts and it must be done as mentioned in the assembly instructions below.

1. All sides on the trailer must be folded down / opened during the mounting of the mesh side/plate side, so that the mesh side/plate side stop brackets can be pressed inside behind the trailer sides as well as headboard/ tailboard. Therefore, fold down both sides and headboard/ tailboard. See the picture below.

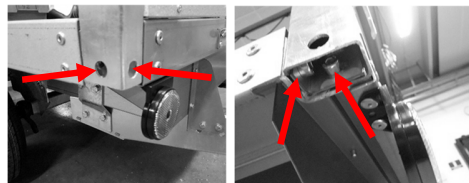


2. Then mount all 4 pcs. mesh side/plate side corner posts to which the mesh side/plate side must be mounted, down into the 4 pcs. lower corner profiles on the trailer. If there are ferrule-end-plugs mounted in the lower corner posts on the trailer, remove these plugs before the mesh side/plate side corner posts can be mounted. See the pictures below.



Especially, applies only to trailer model 2015 P2 with mesh side no.: 90449N

For this model all 4 pcs. of lower corner posts on the trailer, must be replaced with the 4 pcs. long corner posts from the mesh side set. It must be done by loosening the 2 pcs. Allen screw in each corner post and replace the lower corner posts on the trailer with the long corner posts for the mesh sides. The Allen screw must be tightened afterwards when the long corner posts are mounted. See the pictures below.



- When these mesh side/plate side corner posts are mounted, then prepare the 4 pcs. mesh side/plate side for mounting to the 4 pcs. mesh side/plate side corner posts. It must be done by lifting the mesh sides/plate side and mesh/plate headboard/ tailboard of respectively 1 or 2 persons depending on the size for the mesh sides/plate side. They can also be lifted with approved lifting equipment, by mounting lifting slings around the upper frame on the mesh sides and around the plate sides.



Warning!

Never stay under raised mesh side/plate side, the possibility of being crushing between trailer and mesh side/plate side can arise. Be careful not to drop the mesh side/plate side, with the risk of crushing hazard. Always let the assembly work be done by skilled staff.

- The mesh/plate headboard and mesh/plate tailboard have now to be lifted and placed down into the shown mounting groove in the mesh side/plate side corner posts. When placing/ mounting of the mesh/plate headboard and mesh/plate tailboard they shall be mounted in an open angle, so the hinge bolts on the mesh/plate headboard and mesh/plate tailboard can be placed down in the middle of the mesh side/plate side corner posts. Afterwards when the hinge bolts are in bottom position, then push them towards the locking position in the mesh side/plate side corner posts. When the mesh/plate headboard and mesh/plate tailboard are in bottom position in the mounting grooves in the mesh side/plate side corner posts and the mesh/plate headboard/ mesh/plate tailboard are closed, they are secured and locked so they cannot slide up from the groove. They are locked because of the stop plates on the mesh/plate headboard/ mesh/plate tailboard and the locking position in the mesh side/plate side corner posts.

The mesh side/plate side must be mounted by placing them, so the mesh side/plate side hinge bolts will be mounted down in the mounting grooves in the mesh side/plate side corner posts. When the mesh sides/plate sides are in bottom position in the mounting grooves in the mesh side/plate side corner posts and the mesh sides/plate sides are closed, they are secured and locked so they cannot slide up from the groove. They are locked because of the stop block on the mesh side/plate side corner posts, where the mesh sides/plate sides stop plates will be locked underneath. See the pictures below.

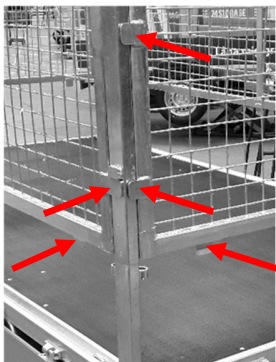


Check before assembling: If there are galvanizing residues in the hinge bolts mounting groove or in the mesh side/plate side corner posts mounting groove, these galvanizing residues must be cleaned with grinding tools or chisel before assembling.

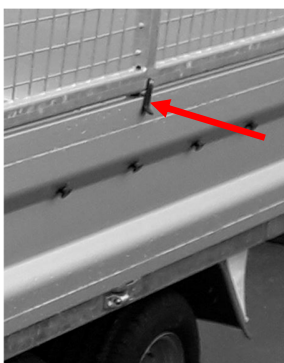
5. When all mesh sides/plate sides are mounted, close all the lower sides as well as headboard/ tailboard on the trailer. Thereby all mesh sides/plate sides are pressed into place by pressing the locking fixtures on the mesh sides/plate sides inwards and the mesh sides/plate sides thus will be locked. See the picture below.



It can be necessary when closing the lower sides as well as the headboard/ tailboard on the trailer, to adjust the angle of the lower locking fixtures in the bottom and the stop plates at the ends of the mesh sides/plate sides as well as on the mesh/plate headboard/ mesh/plate tailboard with a rubber hammer. See the types of fixtures and plates on the picture below. Thereby ensures, that both mesh sides/plate sides and mesh/plate headboard/ mesh/plate tailboard close parallel to the lower sides, as well as the headboard/ tailboard on the trailer.



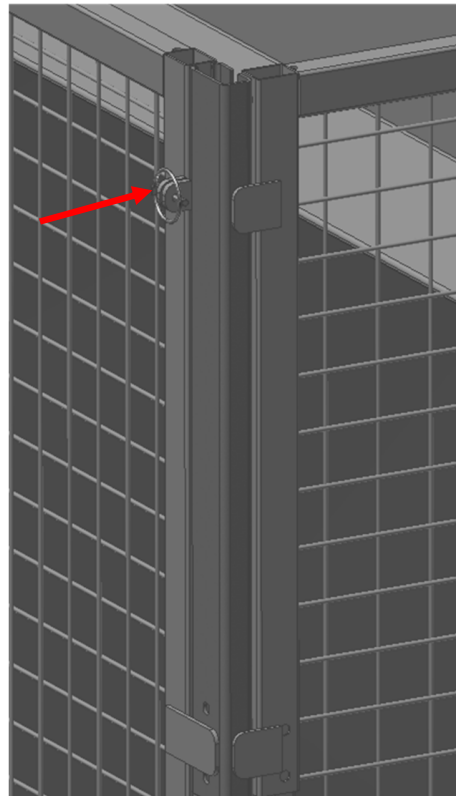
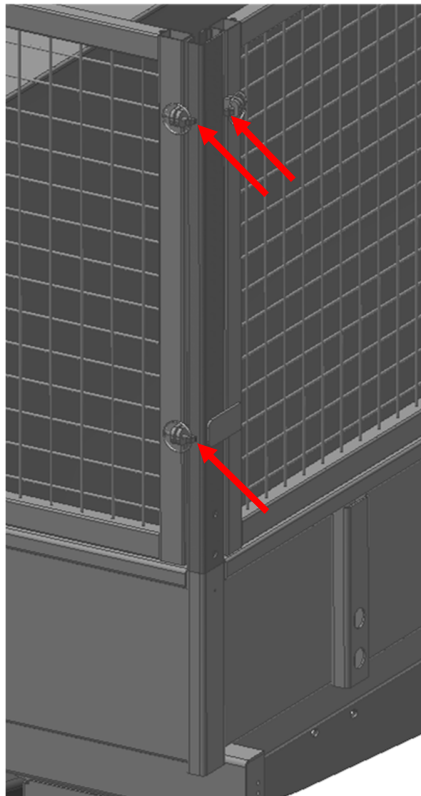
Stop plates, w. shrink flex in middle of both mesh sides/plate sides must be mounted and must afterwards be closed down above the lower trailer sides. See the picture below.



Especially, applies only to trailer models 3015MT, 3515 MT and 3517 MT with mesh side no.: 90809N and 90844N as well as plate sides no.: 90796 and 90797.

As the sides and headboard are welded into a steel construction and thus cannot be opened, the mesh sides/plate sides must be locked with a ring cotter pin, into the welded fishplate at both the mesh sides/plate sides and mesh/plate headboard. The mesh/plate tailboard will be pressed inwards of the lower tailboard and will thereby be locked of the tailboard like other mentioned models.

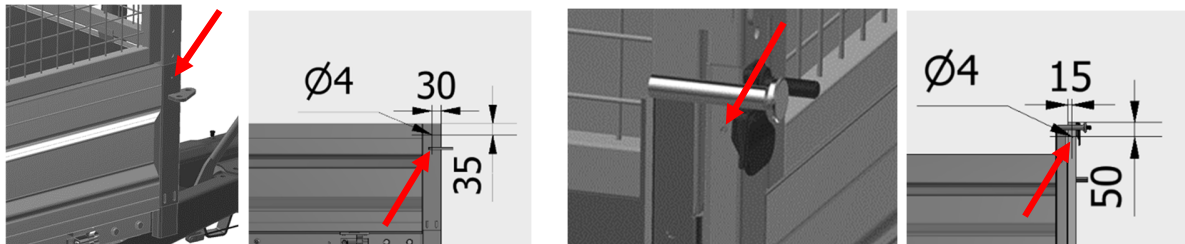
This method with locking with ring cotter pin instead of stop plates and stop block, allows the mesh sides/plate sides and mesh/plate headboard to be mounted down in the mounting grooves from above. Here, they are lowered into a vertical closed position, with the locking fixtures placed inside behind the trailer sides and headboard before they afterwards must be locked with ring cotter pins. See the pictures below.



Attention before driving!

Before driving make sure that all 8 pcs. ring cotter pins are mounted and locked, for locking of the mesh sides/plate sides to the trailer. Then check regularly that the 8 pcs. ring splitter are mounted and locked. Also, make sure the trailers tailboard is closed, so the mesh/plate tailboard is locked.

6. Then drill with a $\varnothing 4$ mm drill bit into the pre-drilled $\varnothing 4$ mm holes in the lower corner posts on the trailer. This means, that a $\varnothing 4$ mm hole must be drilled into the inner profile from the upper mesh side/plate side corner posts, which goes down inside the lower corner posts of the trailer. All trailer models, where the tailboard is hinged in the bottom, the $\varnothing 4$ mm hole is placed in the side of the corner posts on the trailer, both in the front and rear corner posts. In case of top hinged tailboard, the $\varnothing 4$ mm hole is instead placed in the rear of the rear corner posts.
 (By previously delivered trailers without pre-drilled $\varnothing 4$ mm holes in the corner posts. These $\varnothing 4$ mm holes must also be drilled, in the trailers 4 pcs. lower corner posts, and it must be done like shown on the drill sketches below) See the pictures below.



7. Then lock all mesh side/plate sided corner posts by mounting a **DIN 7504 K - $\varnothing 6,3 \times 25$** self-tapping screw in all 4 pcs. corner posts of the trailer. These screws must be tightened, so the mesh side/plate side corner posts are tightened together and locked to the lower corner posts on the trailer. See the pictures below.



 **Attention before driving!**

Before driving make sure, that all 4 pcs. screws are mounted, for locking of the mesh side/plate side to the trailer. Then check regularly that the 4 pcs. screws are tightened. Also, make sure that all trailer sides and head/tailboard are closed, so mesh sides/plate sides are locked.

 **Attention before driving!**

Before driving make sure, that that the load is even distributed and possibly fastened. By fastening, the load must always be fastened to the lashing-eyes on the trailer. Fastening of the load are not to be done to the mesh side/plate side set alone.

4. Disassembling

Demounting is done in the reverse order of the above-mentioned assembly instructions.

After each demounting and mounting of the mesh sides/plate sides as well as associated corner posts, all the mesh sides/plate sides must be locked again before driving. All mesh side/plate side corner posts must be locked in all lower corner posts on the trailer, by mounting a **DIN 7504 K - Ø6,3x25** self-tapping screw in all 4 pcs. corner posts of the trailer. See the pictures below.



In the case of many demounting and mounting, the self-tapping screws and mesh side/plate side corner posts must be check for wear in connection with the thread for both the self-tapping screws and in the mesh side/plate side corner posts. If there occurs visible wear or that you when tightening the screws feel lack pretension of the screws, the screws and mesh side/plate side corner posts must be replaced.

 **Attention before driving!**

Before driving make sure, that all 4 pcs. screws are mounted, for locking of the mesh side/plate side to the trailer. Then check regularly that the 4 pcs. screws are tightened. Also, make sure that all trailer sides and head/tailboard are closed, so mesh sides/plate sides are locked.



Enjoy your new trailer equipment...

Dealer





5. Appendix pages in the transition phase to the new mesh side type

5.1 Important shipping information

It is important to check before shipment and delivery of **old** mesh side components, that if parts have to be send to the **old type** of a mesh side set, that all mesh side corner posts, mesh sides and mesh headboard/ mesh tailboard have external mounted hinges.

As well as it is important to check before shipping and delivery of **new** mesh side components, that if parts have to be send to the **new type** of a mesh side set, that all mesh side corner posts, mesh sides and mesh headboard/ mesh tailboard have internal mounted hinges.

There are thus none of the old and new mesh side components that will fit together, because of the different types of hinges.

ATTENTION.: All T2, T3 as well as Proline models with exception of model 2015P2, have got new part numbers for the mesh side corner posts.

Whereas all 3VT, MT models and 2015P2 have got changed the mesh side corner posts on the already existing parts numbers and the new are thus introduced on the same parts numbers as the old parts numbers.

It is therefore important to **check before shipping and delivery**, of a mesh side set forward, if it is the **old type (External hinges)** or the **new type (Internal hinges)** which must be provided.

When forwarding spare parts for replacement in the old type of mesh side set, it is therefore also important, that the old type of part is manufactured according to the old drawing revision, which matches the old part, which has to be replaced.

5.2 Important for 3VT models

Especially, applies only to 3VT models.

(Transition phase to 3 mm thickness in lower corner posts)

With mesh-side no.: 90370N, 90550N, 90329N, 90536N, 90681N and 90682N.

As the lower corner posts on the 3VT models forward will be changed to 3 mm thickness instead of 2 mm, it requires in the transition phase a modification of the mesh side corner posts before mounting.

The mesh side corner posts will as standard be delivered with an angle bended 2 mm plate welded to the C-profile, which is placed in the end of the mesh side corner posts for the 3VT models. See the pictures below.

This angle bended plate shall remain on the mesh side corner post, if this is fitted down into previously delivered 3VT trailers, mounted with lower corner posts with **2 mm thickness**.

However, the angle bended plate, must be cut away with an angle grinder, on all 4 pcs. mesh side corner posts, if they shall be fitted down into the new type of lower corner posts with **3 mm thickness**. This welded angle bended plate can be removed by cutting away the two 2 pcs. 20 mm long weld seam with an angle grinder and afterwards remove the plate. Then grind the C-profile plane, where the weld seams are removed, and the C-profile can be painted with Galvafruid. See the pictures below, which showing the welded plate to be removed.

